

The Collections



Glass Studio is **not** a glass factory

it is a **"Boutique factory"**

specializing in **glass dinnerware for professional use.**

A leader in the category, Glass Studio has been serving the hospitality market for more than 15 years now.

Our aim is to create "gift boxes" for the food that add value to the offering of a restaurant and conform to professional kitchen requirements:

Durable products (high resistance to breakages and chipping).

Colors that are fused into the glass (no scratching etc) with no Lead or Cadmium release.

Products compatible with all modern kitchen appliances (90°C/200°F dishwashers, 120°C/250°F preheating chambers, tested for use in microwave ovens at 800W for 10 minutes).

As a Boutique factory we work in a "boutique" way:

We are small enough to adapt to specific environments and big enough to be able to handle our luxury clients professionally and exclusively.

What we aim for is a **plate that adds value**, not simply function. Dinnerware that is handmade, authentic, premium and sexy; dinnerware that will make your food presentation look special and unique, sophisticated and classy.

"They challenge themselves to be **the very best** in what they do..... that's the Glass Studio spirit."

Bruno Menard, L'Osier Restaurant, Tokyo

"I have used Glass Studio's extensive range in some of the world's most demanding **volume hotel operations**. The online catalogue, personal service and general "easy to deal with" philosophy of Anna and Vasily, makes the difference..."

Glass Studio is **number one** in the glass plate category!"

Wolfgang Fischer, Executive chef, Emirates Palace, Abu Dhabi

The Glass Studio Concept

concept



The Collections

Taking advantage from our experience in custom made dinnerware with our exclusive clientele of restaurants across the globe, we have created a number of collections combining our most successful shapes, colors and patterns, providing them in more **affordable prices**.

Comprising of a Show plate and a Bread & Butter plate, the collections have the unique, **authentic** Glass Studio style and flair, luxurious colors and patterns that match contemporary designed interiors.

All dinnerware in our collections have rounded edges to withstand **heavy duty use** and colors that are **dish-washable**.

Why buy Glass Studio dinnerware?

Creating income

Restaurant Business is **Show Business**. The basic ingredients of any show business, are always the same: Authenticity (creativity, ingenuity and uniqueness) and Theatricality (where the restaurant becomes a stage for a dining entertainment).

In this sense, a restaurant must always deliver emotions of pleasure and amusement. The more unique the dinnerware, the more "Wow" they create; the more "Wow", the more emotions, success and "buzz"; the more success, the more income.

By its sheer uniqueness, the Glass Studio plate will increase the value of the service sold, and will be a focal point in the restaurant; it will create fans and will give you competitive advantage.

Performing budgeting time

Succeeding to create income in the long run (not just once), is the second function a successful purchase should perform. One expects that dinnerware should perform for at least 3 years in a condition that continually and optimally creates value.

At Glass Studio we make **Instruments for Professionals**; We are committed to quality.

Our dinnerware withstand any treatment in a professional kitchen environment. They are sturdy and durable; they resist chipping; they are stackable and they do not wobble. Hygienically, glass as a material, prevents the development of germs and bacteria.

Both domestic as well as professional (90°C / 195°F) dishwashers can be used. Preheating ovens can be used up to 120°C / 250°F for five hours.

All our colours are fused into the glass. You will not have to worry whether the colours will become hazy or will be flaked off after a few dishwashing sessions. Also, at Glass Studio we use exclusively acid resistant colours (colors that withstand lemon or vinegar acid attacks). Finally, all Glass Studio products are manufactured exclusively with colours that are lead and cadmium free.

The Pearls Collection



"Glass Studio plates enhance the presentation of the food in our restaurant, and have an underestimated beauty that I admire".

Michel Jr Roux, Le Gavroche restaurant, London



The Pearls Collection

The Pearl pattern is created of colored lines on transparent background, evoking a "playful", marine style. The seashell-like design, is proportional to the sizes of the plates and is a unique proposal for any tropical resort restaurant.

The four aquatic colors of the collection, will harmonize with a tropical luxe interior. The customers will be able to unwind while at the same time experience the limitless flavors of the open seas.

Perfect choice for a seafood restaurant, the Pearl dinnerware collection is comprised of irregular coral-shaped plates having a seamless rim that emanates a relaxed, tranquil look.

Description

Show plate:

Free form tropical plate (Code: P2-F1-26). Exterior dimensions: 29,5x28cm/11,6x11,2in; height: 3cm/1,2in; thickness: 5mm/0,2in.

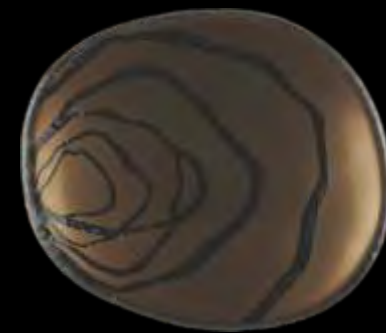
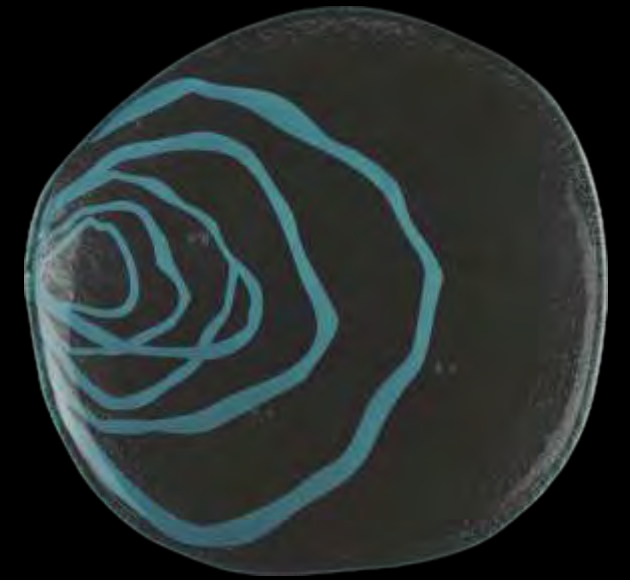
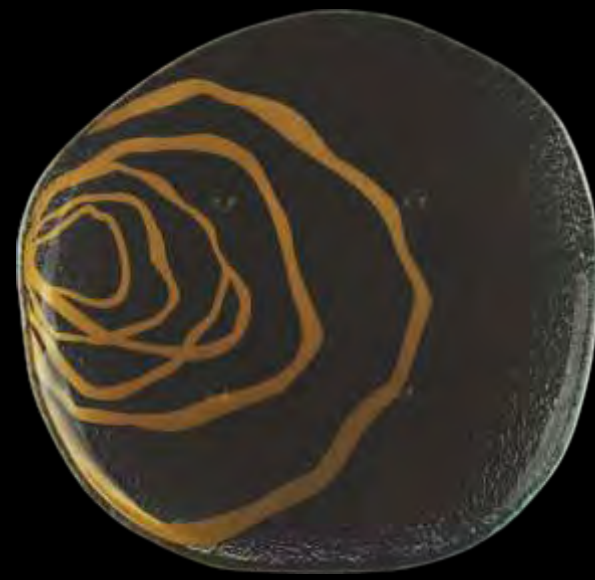
Packaging: 6 pcs in a masterpack of 29,5x29,5x18cm; masterpack weight 5,4kg/190,5oz.

Bread & Butter plate:

Small free form plate (Code: P4-F1-12). Exterior dimensions: 15x13cm/5,9x5,1in; height: 1,5cm/0,6in; thickness: 5mm/0,2in.

Packaging: 24 pcs in a masterpack of 20x20x21,6cm; masterpack weight 3,6kg/127oz.

The Pearls Collection



Metallic Copper
Pantone: 16-1325

Metallic Rattan Gold
Pantone: 14-1031

Metallic Doe Brown
Pantone: 16-1333

Canal Blue
Pantone: 14-4810





The Bloom Collection

"Glass Studio's ideas are amongst the most original that I have ever commissioned. They blend inspiration with craftsmanship in the most unique way..."

Kristoffer Luczak, VP F&B, COD, Macau



The Bloom Collection

Throughout history, floral compositions have been a main source of inspiration to designers. The Bloom pattern, is created of a **colored floral theme** on transparent background, evoking the Baroque as well as the Far Eastern tradition of floral dinnerware decoration.

By reflecting light, the metallic colors of the collection express a uniquely modern approach, are co-ordinated with each other and fit in the **Baroque Luxe** contemporary interiors of velvets and damasks.

The Bloom shapes are a combination of **round plates** having the traditional European round rim that emanates the **classic European look** and tradition.

Description

Show plate:

Round plate with horizontal rim (Code: P2-C1-O3).

Exterior m / 10in; interior diameter: 15,5cm / 6,10in; height: 1,5cm / 1/2in; thickness: 5mm / 1/5in.

Packaging: 10 pcs in a masterpack of 29,5x29,5x18cm; masterpack weight 6,3kg/222oz.

Bread & Butter plate:

Round plate with horizontal rim (Code: P4-C1-00).

Exterior diameter: 17cm / 6,70in; interior diameter: 10cm / 4in ; height: 1,5cm / 1/2in; thickness: 5mm / 1/5in.

Packaging: 12 pcs in a masterpack of 20x20x21cm; masterpack weight 3,2kg/112oz.

The Bloom Collection



Metallic Antique Green Bronze
Pantone: 17-1028

Metallic Copper
Pantone: 16-1325

Andorra Red
Pantone: 19-1327

Metallic Night Purple
Pantone: 19-3935





The Damask Collection

"Glass Studio's attention to detail is second to none. I could not be happier with the relationship we have with this company; It is a delight."

Bernhard Mayer, Ex. Head Chef, The Savoy



The Damask Collection

The Damask... the Byzantine or Islamic weaving technique, originating in the city of Damascus. The Damask Collection, weaves the abstract foliage on the plate, **exposing a rich, silk-like design.**

Its rich and royal colors, make the Damask Collection a unique table setting for **marital and other special events.** Milky whites combined with bright greens, deep purples and golds, emanate, aristocratic feminine innocence and royal baroque magnificence.

Dramatically typical of the western tradition of a 27cm plate, this classically round plate is surprisingly different from other show plates in the dinnerware market.

Description

Show plate:

Round plate with softly raised horizontal rim (Code: P2-C1-O2). Exterior diameter 27 cm/10,63 in; Internal diameter 21 cm/8,27 in; Height: 2 cm/0,79 in; Thickness: 5 mm/0,2 in.
Packaging: 8 pcs in a master pack of 29,5x29,5x18 cm; master pack weight 6,84 kg/241,27 oz.

Bread & Butter plate:

Round plate with large high conical rim (Code: P4-C5-00). Exterior diameter 15 cm/5,91 in; Internal diameter 9 cm/3,54 in; Height: 2 cm/0,79 in; Thickness: 5 mm/0,2 in.
Packaging: 24 pcs in a master pack of 20x20x21,6 cm; master pack weight 5,112 kg/180.32 oz.

The Damask Collection



Bright chartreuse
Pantone: 14-0445

Metallic latte
Pantone: 15-1220

Crown jewel purple
Pantone: 19-3640

White blanc de blanc
Pantone: 11-4800

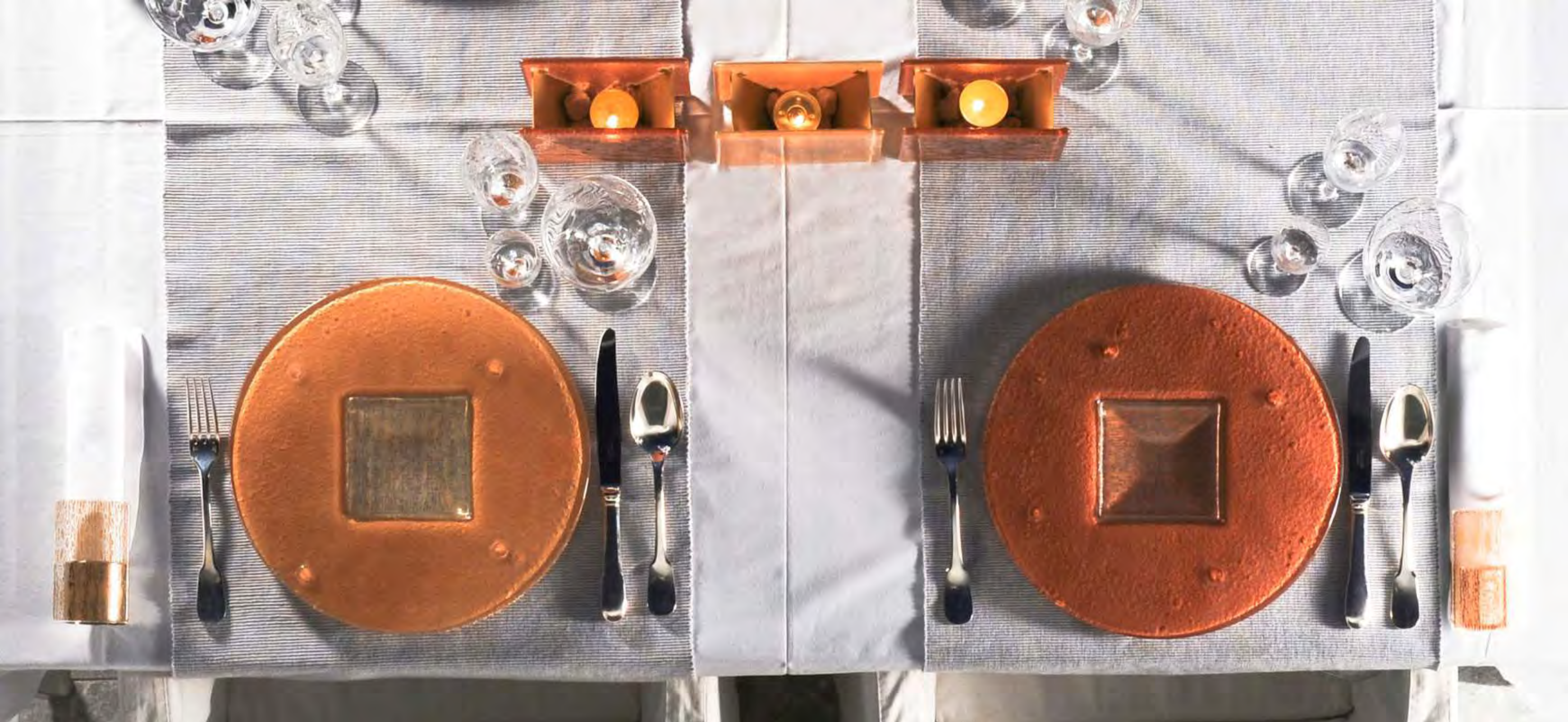




The Moon Collection

"The Glass Studio offer creativity and a real flair for design. We have worked with them for many years and they never fail to deliver a fantastic product."

Mark Askew, Gordon Ramsay's Group Ex.Chef



The Moon Collection

It's rough texture is inspired by our only known natural satellite: the Moon. It is a show plate with **bright ancient crustal highlands** and prominent impact craters.

With colors such as gold, copper and silver, Moon show plates, reflect light just like the only celestial body on which humans have landed does.

Hand crafted based on the **ancient Chinese coin design**, the Moon collection has a round form with a square inlet. As Glass Studio was the **first company to revive this ancient shape in tableware**, we used the hole, as a framed canvas, and turned the shape, into a unique food presentation tool.

Description

Show plate: Round plate with square inlet (Code: P1-F3-01). Exterior diameter: 30 cm/11,8 in; Internal dimensions: 10x10 cm/3,94 x 3,94 in; Height: 2 cm/0,79 in; Thickness: 5 mm/0,2 in. Packaging: 8 pcs in a master pack of 35,5x35,5x14 cm; master pack weight 7,2 kg/253.97 oz.

Bread & Butter plate: Small plate with conical rim (Code: P5-S4-03). Exterior dimensions: 10x10 cm/3,94 x 3,94 in; Height: 1,00 cm/0,39 in; Thickness: 5 mm/0,2 in. Packaging: 4 pcs in a master pack of 12,3x11x6,5 cm; master pack weight 0,58 kg/20.46 oz.

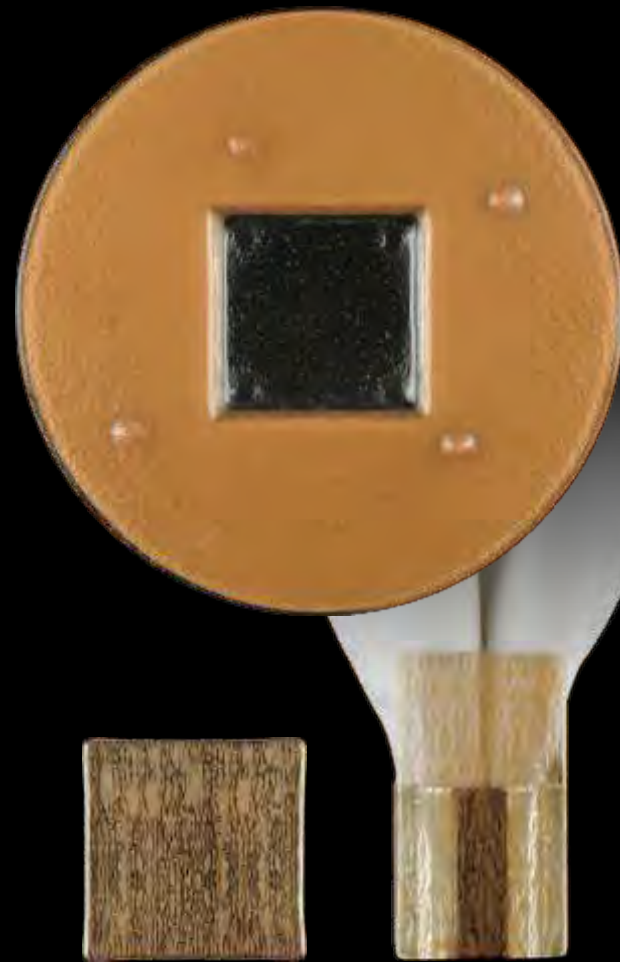
Napkin ring: Napkin holder (Code: SC-00-12). Exterior dimensions: 6 x 5 cm/2,36 x 1,97 inch; diam of the ring 10 cm/3,94 inch; Thickness: 5 mm/0,2 inch. Packaging: 8 pcs in a master pack 32x10x10, master pack weight: 1,2 kg/67,73 oz.

Candle Holder: Large triangular vase (Code: SC-O6-04). Exterior dimensions: 16x6 cm/ 6,30x2,36inch, height 14 cm/5,51 inch; Thickness 5 mm/0,2 inch. Packaging: 6 pcs in a master pack of 29,5x29,5x18, master pack weight: 3,84 kg/135,45 oz.

The Moon Collection



Metallic antique bronze
Pantone: 17-1028



Metallic Rattan Gold
Pantone: 14-1031



Caramel copper
Pantone: 16-1439



Metallic Frost Gray
Pantone: 17-0000





The **Traces** Collection

"I have worked with **Glass Studio plates** at our Italian restaurant at the Ritz Carlton Bahrain. Our guests were wowed and as a result, they kept on coming back and the restaurant turned into a cash machine."

Abdul Baaghil, Hotel manager, Fairmont Nile City



The **Traces** Collection

The hatched pattern of the Traces collection evokes the **earthy**, the rugged and the raw. It is created of a colored surface with transparent lines, evoking an **Urban Nomad style** that can excite customers equally well in a Japanese, Pan Asian or Western restaurant design.

The **authenticity** of the four dark opulent colors of the collection, will enamor the diners and provide them with a unique, memorable experience of **"dinnerware personality."**

The shapes of the collection are comprised of **square** plates having a **softly raised rim**; a first-class choice to furnish an urban, "industrial," table setting.

Description

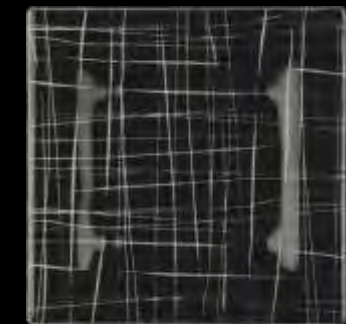
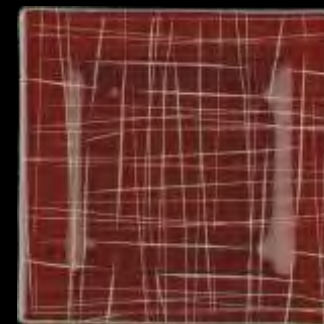
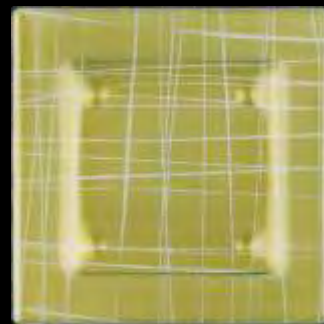
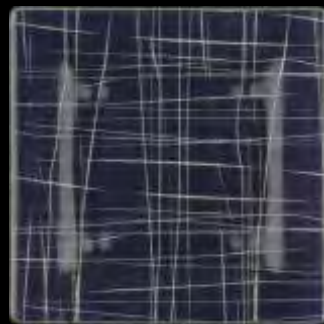
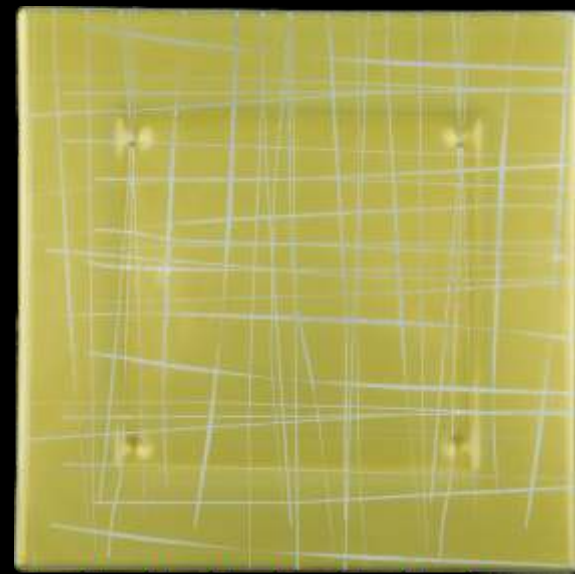
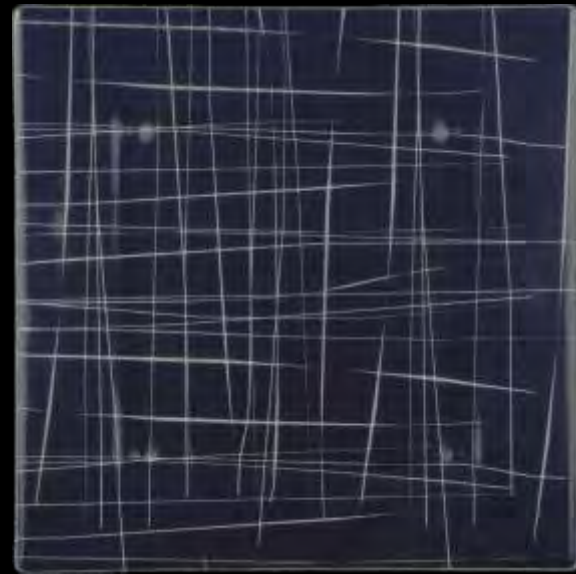
Show plate:

Square plate with softly raised rim (Code: P2-S3-01). Exterior dimensions: 27,5x27,5cm/10,8x10,8in; interior dimensions: 17,5x17,5cm/6,9x6,9in; height: 1,5cm/0,6in; thickness: 5mm/0,2in.
Packaging: 10 pcs in a masterpack of 29,5x29,5x18cm; masterpack weight 9,1kg/321oz.

Bread & Butter plate:

Square plate with softly raised rim (Code: P4-S3-05). Exterior dimensions: 14x14cm/5,5x5,5in; interior dimensions: 9x9cm/3,5x3,5in; height: 1cm/0,4in; thickness: 5mm/0,2in.
Packaging: 18pcs in a masterpack of 20x20x21,6cm; masterpack weight: 4,2 kg/148oz.

The *Traces* Collection



Purple Velvet
Pantone: 19-3725

Metallic Golden Olive Green
Pantone: 16-0639

Andorra Red
Pantone: 19-1327

Liquorice Black
Pantone: 19-1102





The **S**ecret Collection

"Glass Studio is able to interpret anyone's ideas and then make them into a reality."

Marcus Wareing, Petrus Restaurant, London



The **Secret** Collection

The Secret collection is a dinnerware collection of **geometrical** austerity broken down by the handmade process of a **hand painted** stripe. This single colored line, traced perpendicularly on the colored surface of the plate, suggests **Japanese-inspired minimalism**.

The subdued, dark colors of the collection, fit in all contemporary minimalist designed interiors. The **metallic accents** on the other hand, provide an understated opulent feel, evoking "minimal refinement."

This unique dinnerware collection, comprising of **square plates** with Asian-style raised rims, is the perfect choice for a **contemporary, urban table setting**.

Description

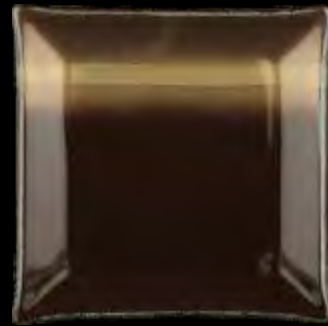
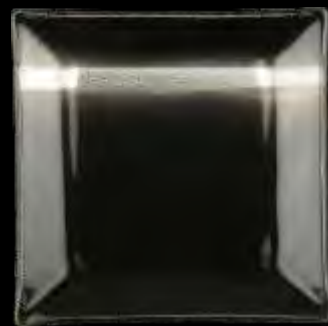
Show plate:

Square plate with large conical rim (Code: P2-S4-O1). Exterior dimensions: 26,5x26,5cm/10,4x10,4in; interior dimensions: 17x17cm/6,7x6,7in; height: 2,5cm/1in; thickness: 5mm/0,2in.
Packaging: 12 pcs in a masterpack of 29,5x29,5x18cm; masterpack weight 10,4kg/367oz.

Bread & Butter plate:

Square plate with thin conical rim (Code: P4-S1-O0). Exterior dimensions: 14x14cm/5,5x5,5in; interior dimensions: 10x10cm/4x4in; height: 1,5cm/0,6in; thickness: 5mm/0,2in.
Packaging: 24 pcs in a masterpack of 20x20x21,6cm; masterpack weight 5,6kg/197oz.

The Secret Collection



Liquorice Black &
Platinum Stripe
Pantone: 19-1102

Seal Brown &
Latte Stripe
Pantone: 19-1314

Mocha Latte &
Tobacco Brown Stripe
Pantone: 15-1220

Metallic Matt Silver &
Platinum Stripe
Pantone: 15-41101

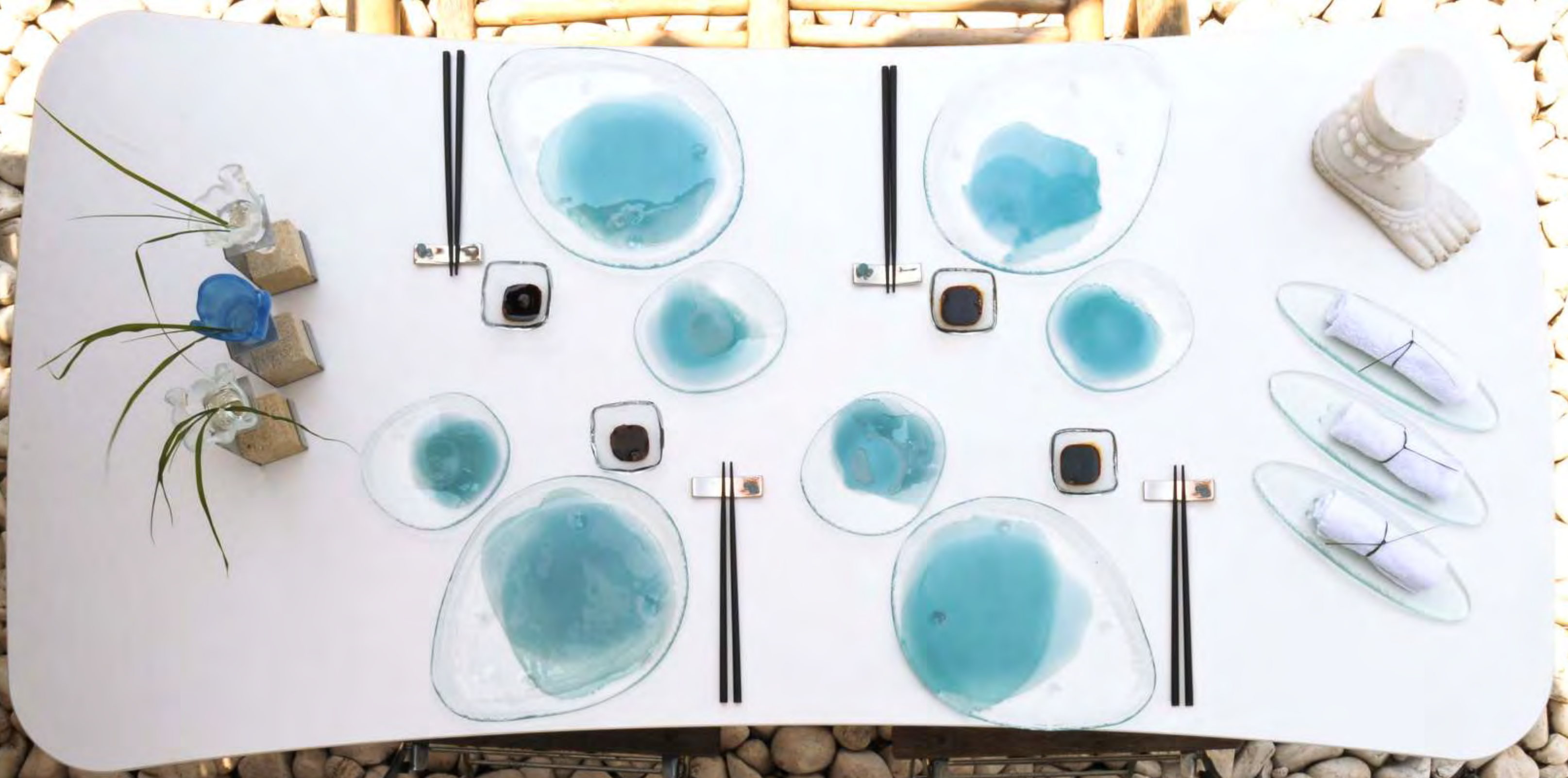


The Tokyo Collection



"I am a big **Glass Studio** fan. I love Anna's personality and creativity! Glass Studio has a family company touch while always coming up with ideas!"

Katrin Herz, EAM, The Ritz-Carlton, Dubai



The Tokyo Collection

With a design that **unfolds like an organism**, from the seed within, and inspired by nature's diversity, the Tokyo pattern is **handcrafted** on both sides of the plate, with its colors overlapping each other, emanating a 3-dimensional effect.

Tokyo's metallic colors of olive, copper, cream and blue, are well fitted for a tropical or island resort; while the form of its shapes are **structured on the curve**, follow the "flow" and promote the harmony between human habitation and the natural world. The Asian look, the handmade feel and the sustainable shapes, keep one of our oldest collections, strong in our customer preferences.

Description

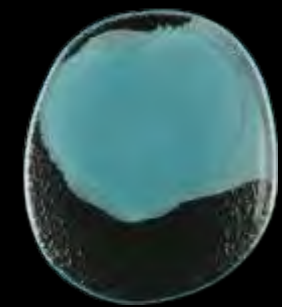
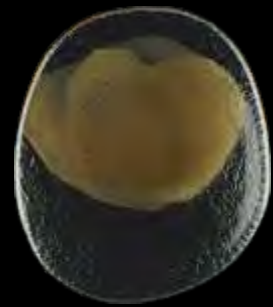
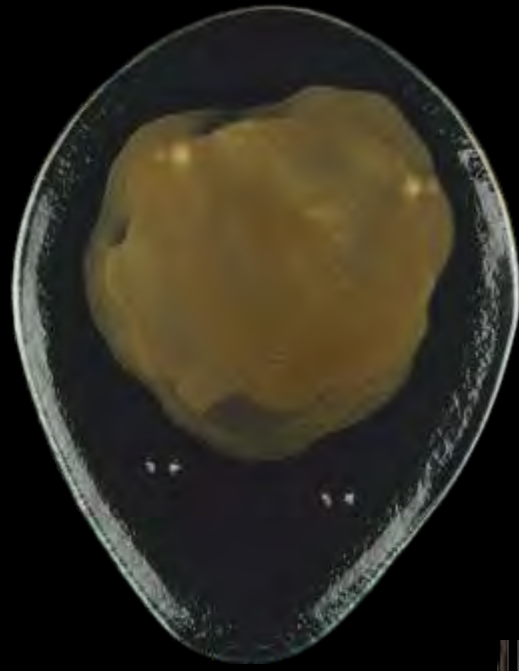
Show plate: Oval shallow plate (Code: P2-F2-O2). Exterior dimensions: 30,0x24,00 cm/11,81x9,45 in; Height: 2 cm/0,79 in; Thickness: 5 mm/0,2 in. Packaging: 12 pcs in a master pack of 29,5x29,5x18 cm; master pack weight: 7,3 kg/257,50 oz.

Bread & Butter plate: Small free form plate (Code: P4-F1-12). Exterior dimensions: 15x13 cm/5,91x5,12 in; Height: 1,50 cm/0,59 in; Thickness: 5 mm/0,2 in. Packaging: 24 pcs in a master pack of 20x20x21,6 cm; master pack weight: 3,6 kg/126,99 oz.

Chopstick Holder: With glass buttons (Code: SC-17-12). Exterior Dimension: 7,2x2 cm/2,83x0,79 in; Height: 2 cm/0,79 in. Packaging: 12 pcs in a master pack of 22,5x10x5,8cm; master pack weight: 0,42 kg/14,82 oz.

Soya Sauce Bowl: Small square bowl (Code: B5-S4-O2). Exterior Dimensions: 6,5x6,5 cm/2,56x2,56 in; Height: 5 cm/1,97 in; Thickness: 5mm/0,2 in. Package: 20 pcs in a master pack of 22,5x10x5,8cm; master pack weight: 1kg/35,27 oz.

The Tokyo Collection

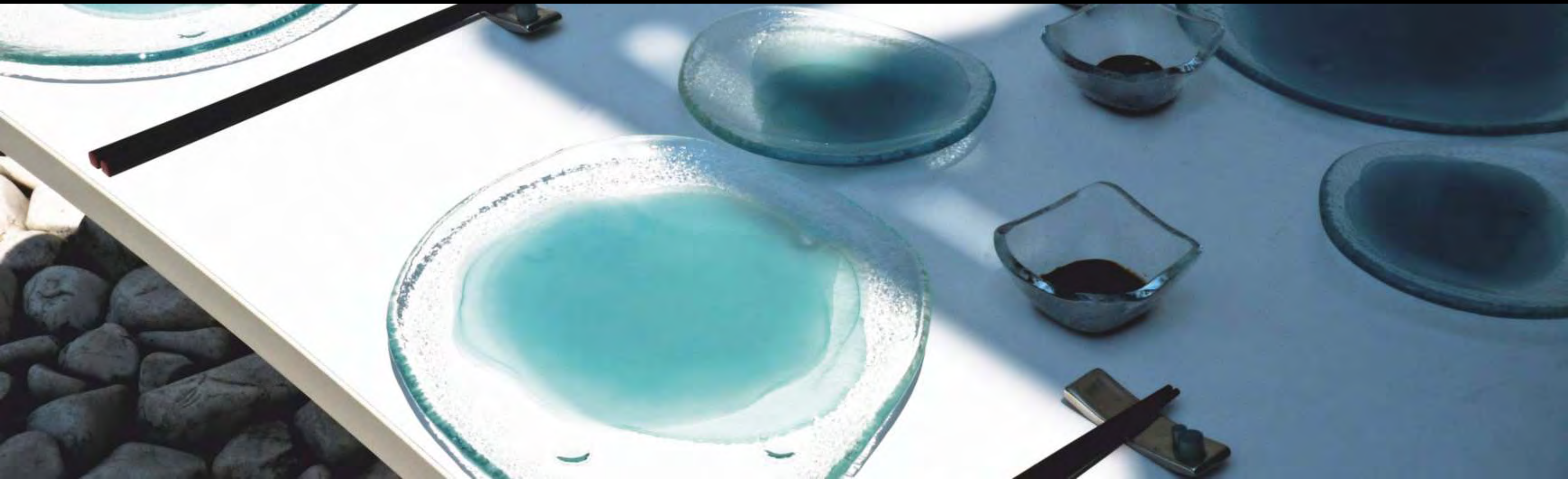


Metallic Antique Bronze
Pantone: 17-1028

Caramel copper
Pantone: 16-1439

Metallized rutabaga
Pantone: 12-0806

Canal blue
Pantone: 14-4810

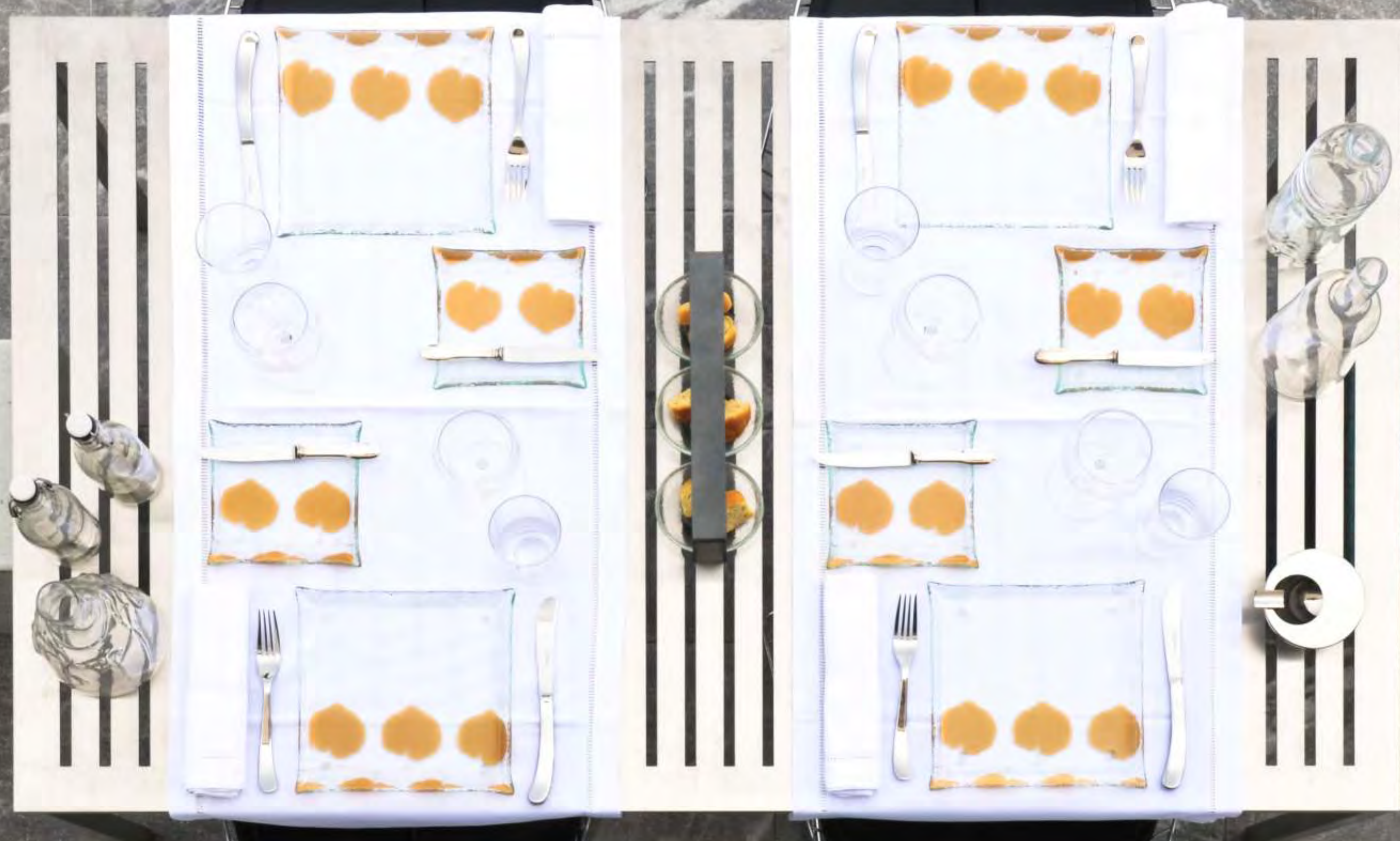




The Phyllo Collection

"Glass Studio appreciates our brand's commitment on quality and refinement & have tailor-made design that suits our needs."

Ex. Chef Peter Find, The Ritz-Carlton Hong Kong



The **Phyllody** Collection

Phyllody... the process by which plant organs turn into foliage. Leaves... plant organs specializing in photosynthesis: the eternal process with which **Gaia sustains Herself**, providing food, water and oxygen to most animals, including humans. The pattern is an Ode to Gaia, to Phyllody.

Its natural, brownish, earthy colors will work well in a western restaurant environment as well as in an Pan Asian one.

Its low conical rim and its square shape, contrasts well with the **eternity of its foliage** providing a modern interpretation of a classic pattern.

Description

Show plate:

Square plate with thin conical rim (Code: P2-S1-00). Exterior dimensions: 24x24 cm/9,5x9,5 in; Internal dimensions: 20x20 cm/7,87x7,87 in; Height: 2 cm/0,79 in; Thickness: 5 mm/0,2 in. Packaging: 14 pcs in a master pack of 25,6x25,6x16,5 cm; master pack weight 9,7 kg/342,16 oz.

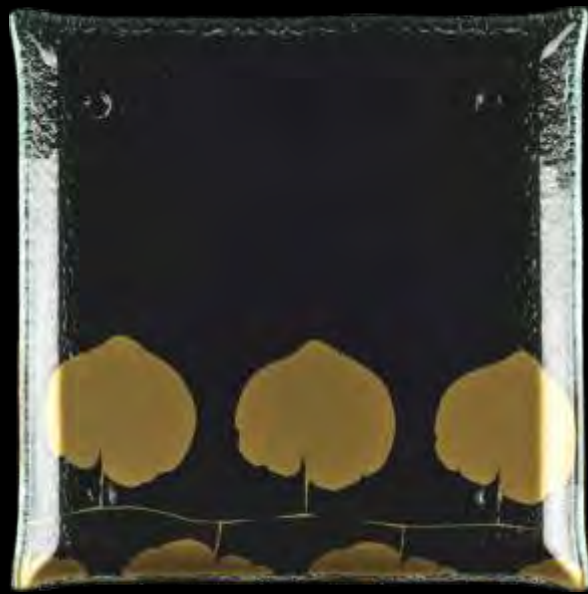
Bread & Butter plate:

Square plate with thin conical rim (Code: P4-S1-05). Exterior dimensions: 17X17 cm/6,69x6,69 in; Internal dimensions: 13X13 cm/5,12x5,12 in; Height: 1,5 cm/0,6 in; Thickness: 5 mm/0,2 in. Packaging: 18 pcs in a master pack of 20x20x21,6 cm; master pack weight: 6,23 kg/219,76 oz.

Bread Basket:

Rectangular metal stand, with 3 bowls (Code: SC-O8-90). Exterior Dimensions: 31x6 cm/12,2 x 2,36 in; Interior Dimensions: 6x5,2 cm/2,36 x 2,05 in; Height 14 cm/5,51 in. Packaging: 4 pcs in a master pack of 35,5x35,5x14 with a master pack weight: 4,8 kg/169,32 oz.

The Phylloidy Collection



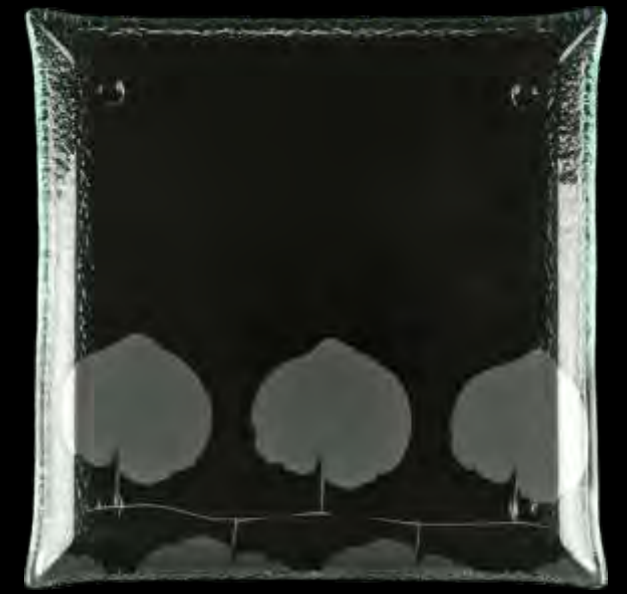
Metallic Antique Bronze
Pantone: 17-1028



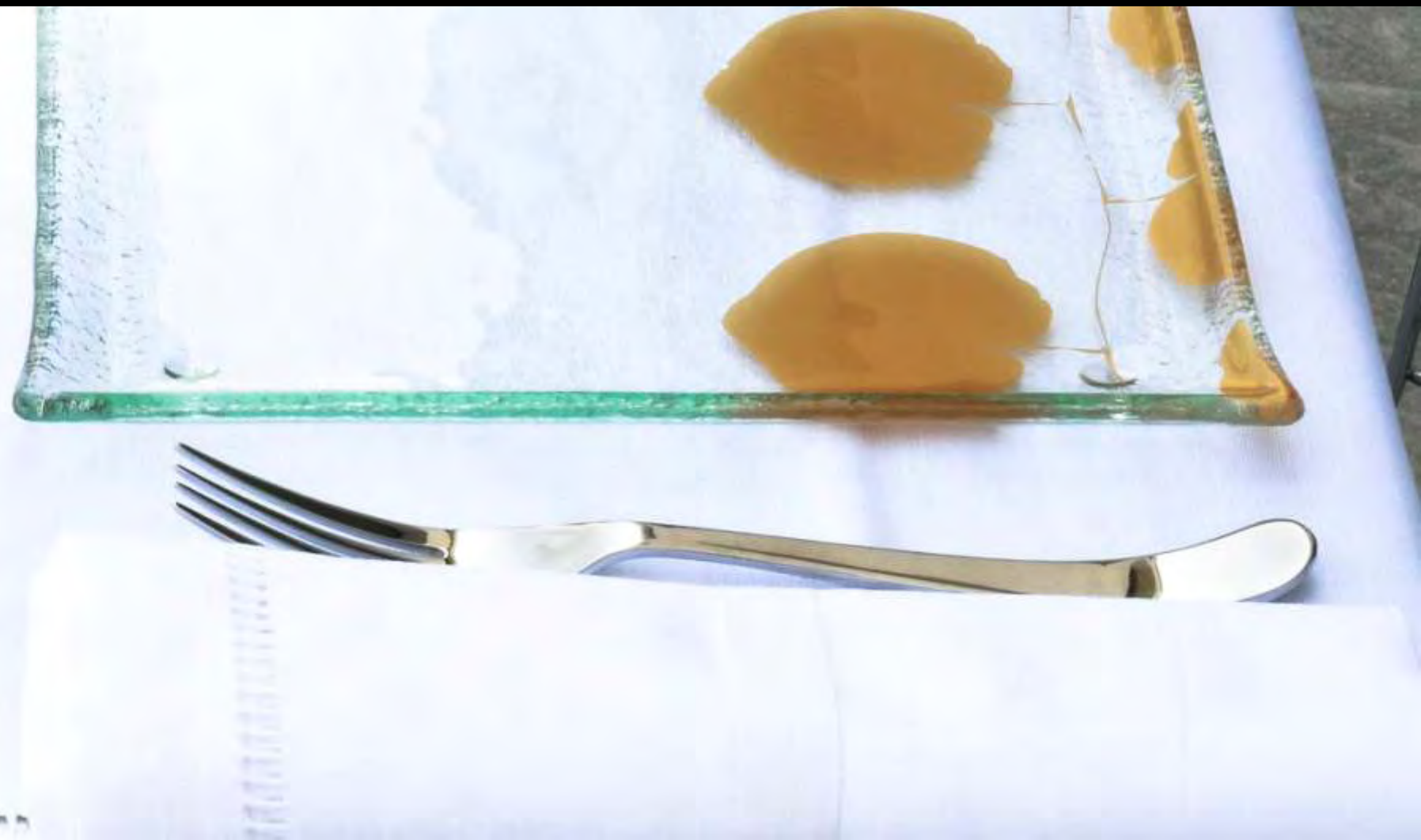
Metallic Rattan Gold
Pantone: 14-1031



Seal Brown
Pantone: 19-1314



Metallic Frost Gray
Pantone: 17-0000



Our Customers



Recent Projects

Americas

United States New York The New York Palace New Jersey Bally's Philadelphia Le Méridien Las Vegas Fleur De Lys at Mandalay Bay, Mandarin Oriental, Vdara Hotel & Spa, Encore Suites Aria Resort & Casino, The Cosmopolitan of Las Vegas Los Angeles The Ritz-Carlton at L.A. Live Park City St. Regis Deer Crest Clearwater Hyatt Regency Clearwater Beach Resort & Spa California The Ritz-Carlton Laguna Niguel Atlanta St. Regis Denver Four Seasons, Ritz Carlton Vail Four Seasons Hawaii St. Regis Princeville

Canada Toronto Ritz Carlton Vancouver Fairmont Pacific Rim Hotel & Residences

Central & S. America Mexico St. Regis Punta Mita Puerto Rico St.Regis Bahia Beach Barbados Sandy Lane Hotel Bora Bora Four Seasons Costa Rica Four Seasons Cayman Islands Ritz Carlton

Middle East

Makkah Raffles Clock Tower, Jeddah Lumiere Restaurant Doha Renaissance, Courtyard Marriott, Rotana Oryx, Diplomatic Club Bahrain Sofitel Zallaq, Totally Fish restaurant, Royal Safriya Palace Dubai Sofitel Jumeirah Beach, The Address Dubai Mall, The Address Down Town Burj Dubai, The Meydan, One & Only Royal Mirage, Ritz-Carlton DIFC Abu Dhabi Fairmont Bab Al Bahr, Anantara Qasr Al Arab, Banyan Tree Al Wadi, Crowne Plaza, Yas Hotel, Aloft Muscat Al Bustan Palace Kuwait Hotel Missoni, Totally Fish Restaurant, Sarai Restaurant Cairo Fairmont Nile Alexandria Four Seasons Amman Grand Hyatt, Four Seasons, Marriott Hotel Aqaba Moevenpick Aqaba, Moevenpick Tala Bay Dead Sea Marriott Jordan Valley, Moevenpick Hotel Beirut Le Gray Hotel, Momo at the Souks restaurant.

Asia-Australia

SE Asia Singapore Fairmont Hotel, The Ritz-Carlton Millenia, Marina Bay Sands Bali W Hotel Taipei W Hotel Kuala Lumpur Mandarin Oriental Hotel Vietnam Sheraton Nha Trang Hotel and Spa Bangkok St. Regis

China Hong Kong Ritz Carlton Macau Altira, Banyan Tree Resort, City of Dreams, Galaxy Hotel Beijing Aman at Summer Palace Shanghai The Peninsula Hotel Qingdao Shangri-la Lijiang Pullman Lijiang Resort & Spa

India The Taj Mahal Palace and Towers Mumbai, The Taj Palace Hotel New Delhi, The Westin Gurgaon New Delhi, The Westin Mumbai Garden City, The Westin Pune Koregaon Park, ITC Royal Gardenia Bangalore, Jaypee Vasant Continental, Sheraton Bangalore, Jaypee Green Golf Resort

Japan - Korea Osaka St. Regis Nagoya Xiv Hakone Rikyu Hotel, Aile D' Ange Restaurant, Arc En Ciel Luxe Mariage Nagano Hotel Bleston Court Aichi Xiv Arima Rikyu Kobe Oriental Hotel Kagoshima Sankara Hotel & Spa Yakushima Korea Sheraton Incheon Hotel

Indian Ocean Mauritius The Beachcomber Paradise Hotel and Golf Club Seychelles Four Seasons, Raffles Maldives Kurumba Resort Maldives, Conrad Rangali Island, Sheraton Full Moon, One & Only Reethi Rah

Europe

Paris Le Royal Monceau a Raffles Hotel London The Fairmont Savoy, Dukes Hotel, Vatika Restaurant Venice Hilton Molino Stucky Florence Rocco Forte Hotel Savoy Zurich Marriott Zurich Brussels Rocco Forte Hotel Amigo Barcelona W Hotel Lisbon Sheraton, Four Seasons Ritz Istanbul W Hotel Greece The Romanos Costa Navarino, Westin Resort Costa Navarino, The Met Chandris Thessaloniki

Other Projects

United States, Canada & Mexico New York The Plaza, Mandarin Oriental, Ritz Carlton Battery Park, Ritz Carlton Central Park, Plaza Athenee, St. Regis, Aureole, Nobu 57, Bryant Park, Swissotel the Drake, The Mark, The Modern, Burke and Donatella, Metrazur, Gordon Ramsay, Grand Hyatt NY, Fiamma NY, The Plaza, Loews Regency Hotel, Fairmont the Plaza New Jersey Trump Taj Mahal Hotel Casino Philadelphia Four Seasons Las Vegas The Ritz Carlton Lake Las Vegas, The Venetian, Wynn Resort (Okada), Bellagio Resort & Hotel (Picasso, Prime, Le Cirque, Fix, Shintaro, Sensi, Yellowtail), Mandalay Bay (Aureole), MGM Grand Hotel & Casino (Nobhill, Shibuya, Joel Robuchon), Mirage, Rio, Paris Las Vegas, Hilton, Charlie Palmer Steak, Treasure Island (Social House), The Signature, David Burke, Wolfgang Puck, Caesars Palace (Spago, Guy Savoy), Red Rock Station Casinos, Loews Lake Resort, Cut, Trump International Hotel & Tower, Il Palazzo, Palm Place, Pure Management Group Nevada Grand Sierra Resort, Hyatt Regency Lake Tahoe San Francisco Four Seasons, Four Seasons Palo Alto, Ritz Carlton, St. Regis, Gary Danko, Park Hyatt, Grand Hyatt, Ritz Carlton Half Moon Bay Los Angeles The Peninsula Beverly Hills, Raffles L' Ermitage Beverly Hills, Ritz Carlton Huntington Beach, Spago Beverly Hills, Regent Beverly Wilshire, CUT, Grace, Montage Resort & Spa, Hyatt Huntington Beach, Four Seasons Aviara, Four Seasons at Beverly Hills, The Beverly Hills Hotel & Bungalows, The US Grant California Four Seasons Westlake Village, Georges at the Cove, The Island Newport Beach, Hyatt Newport Beach Miami Mandarin Oriental, Intercontinental, Ritz Carlton Coconut Grove, The Ritz Carlton Key Biscayne, Hyatt Regency, Barton G., Conrad, Four Seasons, Ritz Carlton South Beach, Ritz Carlton Palm Beach Orlando The Ritz Carlton Orlando Grande Lakes, Hyatt Regency Grand Cypress Scottsdale Four Seasons Troon North, JW Marriott Desert Ridge, The Phoenician, Sanctuary on Camelback Chicago Four Seasons, The Ritz Carlton, Everest, Tru, Swissotel, Park Hyatt, Trump International Hotel & Tower Chicago, The Peninsula Dallas Charlie Palmer Group, Grand Hyatt, Joule Fort Lauderdale St. Regis, Hilton Beach Resort Atlanta Four Seasons, W Atlanta, Ritz Carlton Boston Intercontinental, The Ritz Carlton Boston Common, Four Seasons Washington Four Seasons, The Ritz Carlton (Maestro), Mandarin Oriental, St. Regis, The Ritz-Carlton Westchester Toronto Fairmont Royal York, Four Seasons Toronto, Hyatt Regency Calgary, Metropolitan Hotel, Sheraton Suites Calgary Mexico The Ritz Carlton Cancun, Presidente Intercontinental Mexico City Hawaii Four Seasons Hualalai, Four Seasons Lanai, Four Seasons Maui, The Lodge at the Koale, Mandarin Kahala

Middle East Riyadh Al Faisaliah, Four Seasons Jeddah Corniche a Rosewood Hotel Doha Ritz Carlton, Four Seasons, Intercontinental, Al Sharq Village and Spa, Marriott, W Hotel Doha Damascus Four Seasons Bahrain Ritz Carlton, Gulf Hotel, Moevenpick Dubai Burj Al Arab, Emirates Towers, Park Hyatt, Ritz Carlton, Madinat Jumeirah, Four Seasons Golf Club, Hyatt Regency, Desert Palm Resort, Jebel Ali Golf Resort & Spa, Intercontinental & Crowne Plaza Dubai Festival City, The Fairmont, Grand Hyatt, Atlantis the Palm, The Monarch Abu Dhabi Emirates Palace, Shangri-la Muscat The Chedi, Grand Hyatt Cairo Fairmont Heliopolis

Asia-Australia Singapore Beauford Hotel, Fullerton Hotel, Grand Copthorne, Raffles Hotel, Grand Hyatt, Four Seasons, Sheraton Towers, St. Regis, Aman Resorts, Gallery Hotel, Shangri-la, Mandarin Oriental Hong Kong Conrad, Intercontinental, Island Shangri-La, Mandarin Oriental, Marco Polo, Kowloon Shangri-la, Langham Place, Watermark Macau Wynn, Lisboa Hotel, The Venetian, Galaxy Starwood, Crown, MGM Grand, Sofitel, Sands, Four Seasons Beijing Shangri-La, St. Regis Shanghai Grand Hyatt, Pudong Shangri-La, Hilton Sri Lanka The Fortress Manila Shangri-La Mactan Japan Tokyo Park Hyatt, Grand Hyatt, Mandarin Oriental, Conrad, Four Seasons, The Prince Park Tower Hotel, Renaissance Tokyo Hotel, L'Osier, Hotel Okura, Intercontinental, Ritz Carlton Kyoto Miyama-so, Takarazuka Hotel, Westin, Yonemura, Il Ghiottone, Hyatt, Myako Osaka Ritz Carlton, Westin, Hotel New Otani, Imperial Hotel Nagoya Sir Winston Hotel, Westin, Marriott, Hilton Jakarta Hotel Mulia Senayan Bangkok The Oriental, The Landmark Malaysia Shangri-La's Rasa Ria Resort Vietnam Sofitel Metropole Hanoi Korea JW Marriott, Hilton, W Seoul Australia Crown Casino Melbourne, Hilton Sydney

Europe Paris Plaza Athenee, The Ritz, Four Seasons George V, Park Hyatt Place Vendome, Le Meridien Etoile, Napoleon, Le Chiberta, L'Angle du Faubourg, Hyatt Regency Paris-Madeleine, Spoon Food & Wine London The Dorchester, Jumeirah Carlton Tower, Claridge's, Le Gavroche, Pied a Terre, Benares, Gordon Ramsay (at the Claridge's, Maze, Petrus), Nobu Park Lane, Four Seasons, Ritz London, Marriott 47 Park str, Intercontinental Park Lane, Grosvenor House, Berkeley Hotel, Rocco Forte Brown's Hotel, The Connaught, Quilon Restaurant & Bar Italy Rome Hilton Cavaliere, Rocco Forte Hotel De Russie Milan Park Hyatt, Bulgari Venice Gritti Palace, Il Palazzo at the Bauer Capri Capri Palace Hotel & Spa Florence Enoteca Pinchiorri Croatia Dubrovnik Hotel Libertas Rixos Amsterdam Hotel Okura, Intercontinental Amstel Berlin Kempinski Adlon, Ritz Carlton, Grand Hyatt Brussels Conrad Barcelona Florida, Hotel Arts Barcelona, Hilton Diagonal Mar Switzerland Geneva Beau-Rivage Palace, Swissotel-Metropole, Four Seasons Des Bergues, Raffles Le Montreux, Rocco Forte Le Richmond Zurich Park Hyatt Budapest Four Seasons Monaco Societe des Bains de Mer Dublin Four Seasons, The Shelbourne, Conrad Warsaw Hilton, Hyatt Vienna Hilton Moscow Park Hyatt Ararat, Swissotel Krasnye Istanbul Ritz Carlton, Ciragan Palace Kempinski Greece Athens Grande Bretagne, Grand Resort Lagonissi, Semiramis, Intercontinental, Hilton, Arion Resort & Spa, The Westin Athens, Regency Casino Mont Parnes, Spondi restaurant, The Tsitouras Collection Thessaloniki Hyatt Regency Hotel & Casino, Nikopolis Hotel Crete Elounda Beach, Blue Palace Resort & Spa

GLASS STUDIO S.A. CONTACTS WORLDWIDE



ASIA

Vasily Pashalis
vasily@myglassstudio.com
Tel: +30-23940-20760
Fax: +30-23940-20764
Mob: +30-6945774271
Skype: Vasily Myglassstudio



EUROPE-MIDDLE EAST

Anna Papaharisi
anna@myglassstudio.com
Tel: +30-23940-20760
Fax: +30-23940-20764
Mob: +30-6945774270
Skype: Anna Myglassstudio



EUROPE-MIDDLE EAST

Nana Kantsa
nana@myglassstudio.com
Tel: +30-23940-20760
Fax: +30-23940-20764
Mob: +30-6944653526
Skype: Nana Myglassstudio



SOUTH-EAST ASIA

Glass Studio Asia Pacific
Militsa Gjorgieva
militsa@myglassstudio.com
Tel: +30-23940-20760
Fax: +30-23940-20764
Skype: Militsa Myglassstudio



USA

Kate Aldrich
kate@myglassstudio.com
300 Park Way West,
NV 89016, Las Vegas, USA
Tel: +1-3037442151
Fax: +1-3037614491
Mob: +1-3037264738
Skype: Kate Myglassstudio



JAPAN

Glass Studio Japan
Shigeru Kakizaki
kaki@myglassplate.jp
Gion-Machi Minamigawa 581,
Yamato-Oji,
Higashi-Hairu, Shijyo-Do
605-0074 Kyoto, Japan
Tel: +81-755321470
Fax: +81-755320634
Mob: +81-9030807435
Skype: Kaki Myglassstudio